

OM9-900-W ISM Fiberglass Omni Antenna

OM9-900-W is an outdoor omnidirectional fiberglass base station antenna optimized for data communications in ISM frequency band.

It is ideal for professional communication systems requiring reliable performance in harsh environments. Featuring a low VSWR (<1.5:1) and 9 dBi gain, this antenna ensures efficient signal transmission and broad coverage.

The rugged fiberglass radome offers excellent weather resistance and durability.

FEATURES

- Rugged Design
- Heavy Duty, UV Resistant Fiberglass Radome for Extreme Weather
- Truly Omnidirectional Radiation Pattern (360° Horizontal Beamwidth)
- Long Life: 10+ years
- High Strength Stainless Steel Base
- N female connector
- 50 ohms impedance
- VSWR: 1.5:1 in the full band
- Stainless Steel Mounting Hardware
- Mounting Hardware up to 3" pipe or tower leg side mount
- Wind Survival: 201 Km/hr (125 mph)
- Easy installation



Electrical Specifications

Frequency Range	870-960 Mhz
VSWR	< 1.5:1
Bandwidth	70 Mhz
Gain	9.0 dBi
Impedance	50 ohms
Maximum Power	200 watts
Polarization	Vertical
Lightning Protection	Direct Ground
Operational Temperature	-40°C to +80°C
Horizontal Beamwidth	360°
Vertical Beamwidth	8° at 3dB HPBW
Connector	N Female

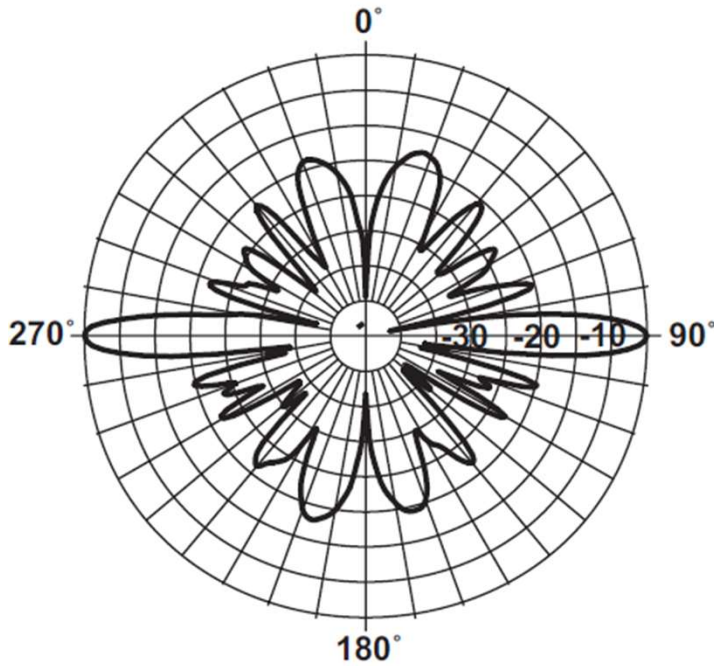
MODELS & BANDS

Model	Frequency
OM900-W-A	870-940 Mhz
OM900-W-B	890-960 Mhz

MIKOS TECHNOLOGY, LLC
 100 Overlook Center, 2nd Floor, Suite 118
 Princeton, New Jersey, 08540
www.mikostech.com

OM9-900-W ISM Fiberglass Omni Antenna

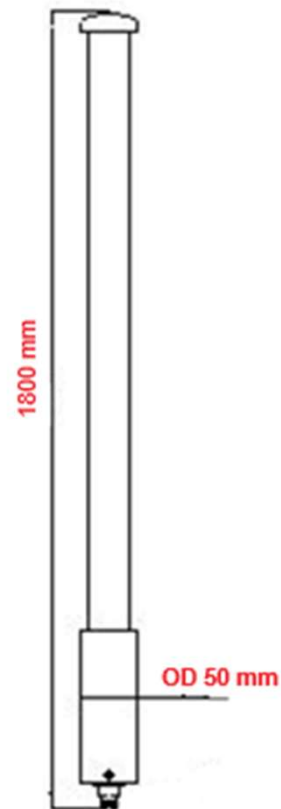
Vertical Radiation Pattern



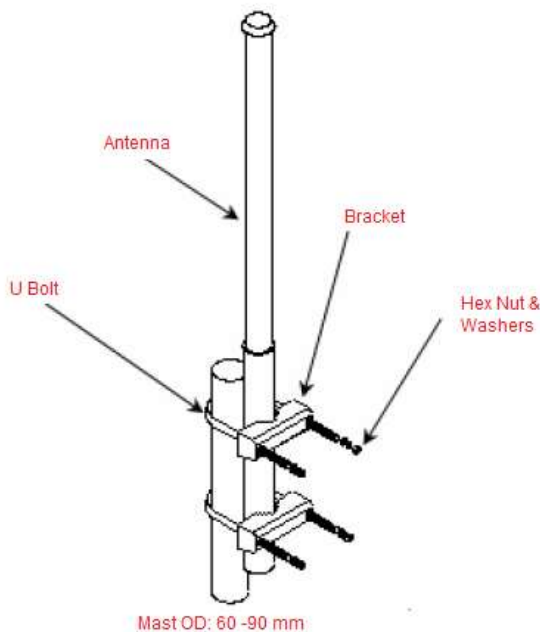
Mechanical Specifications

Length	1800 mm
Width	50 mm
Weight	2.0 Kg
Connector	N Female
Mast Diameter	60 to 90 mm
Wind Rating (Antenna and Mount)	208 Km/hr 130 Mph
FPA Transversal Equivalent	1.02 sq. foot

Dimensions



Mounting



MIKOS TECHNOLOGY, LLC
100 Overlook Center, 2nd Floor, Suite 118
Princeton, New Jersey, 08540
www.mikostech.com